



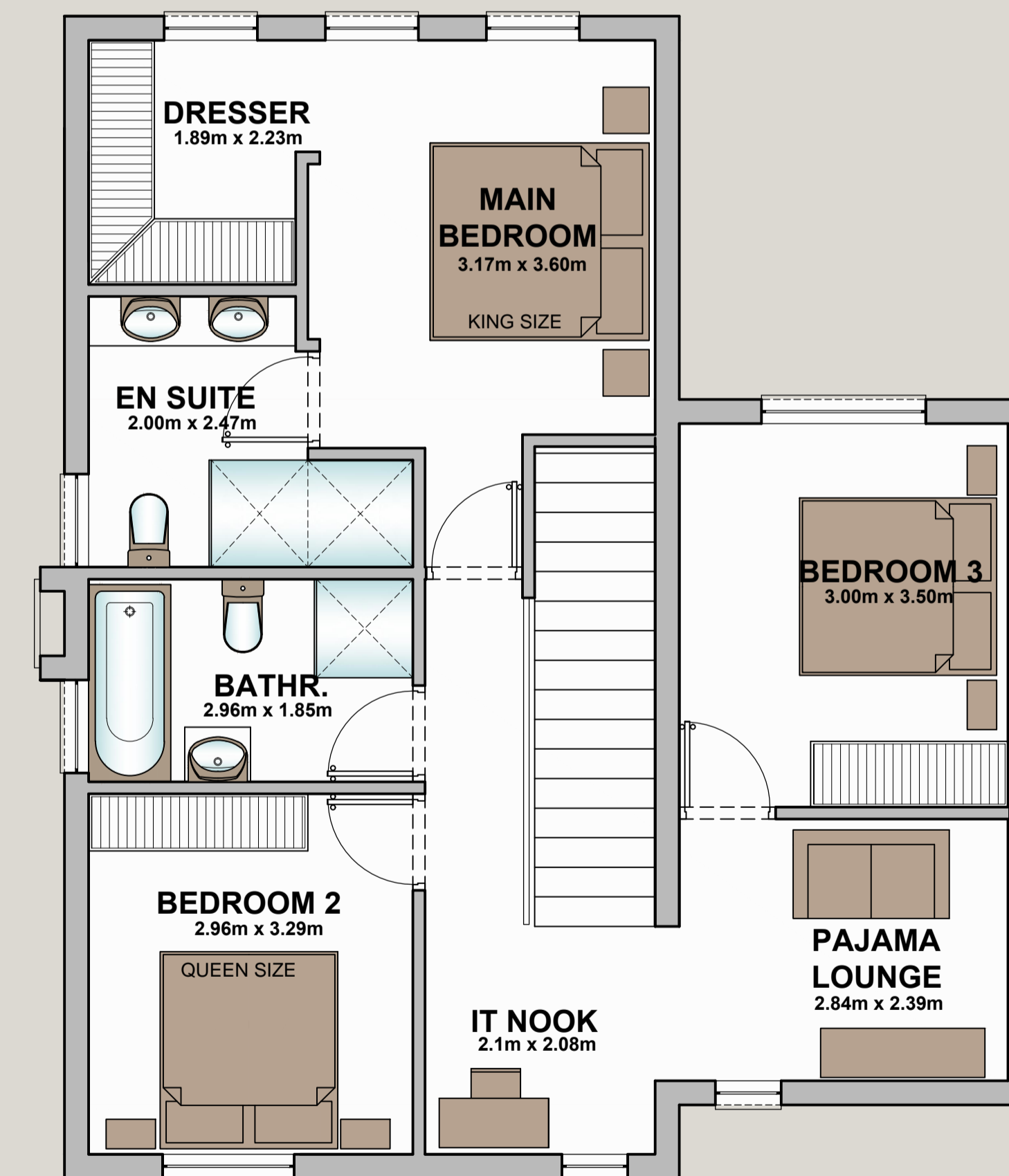
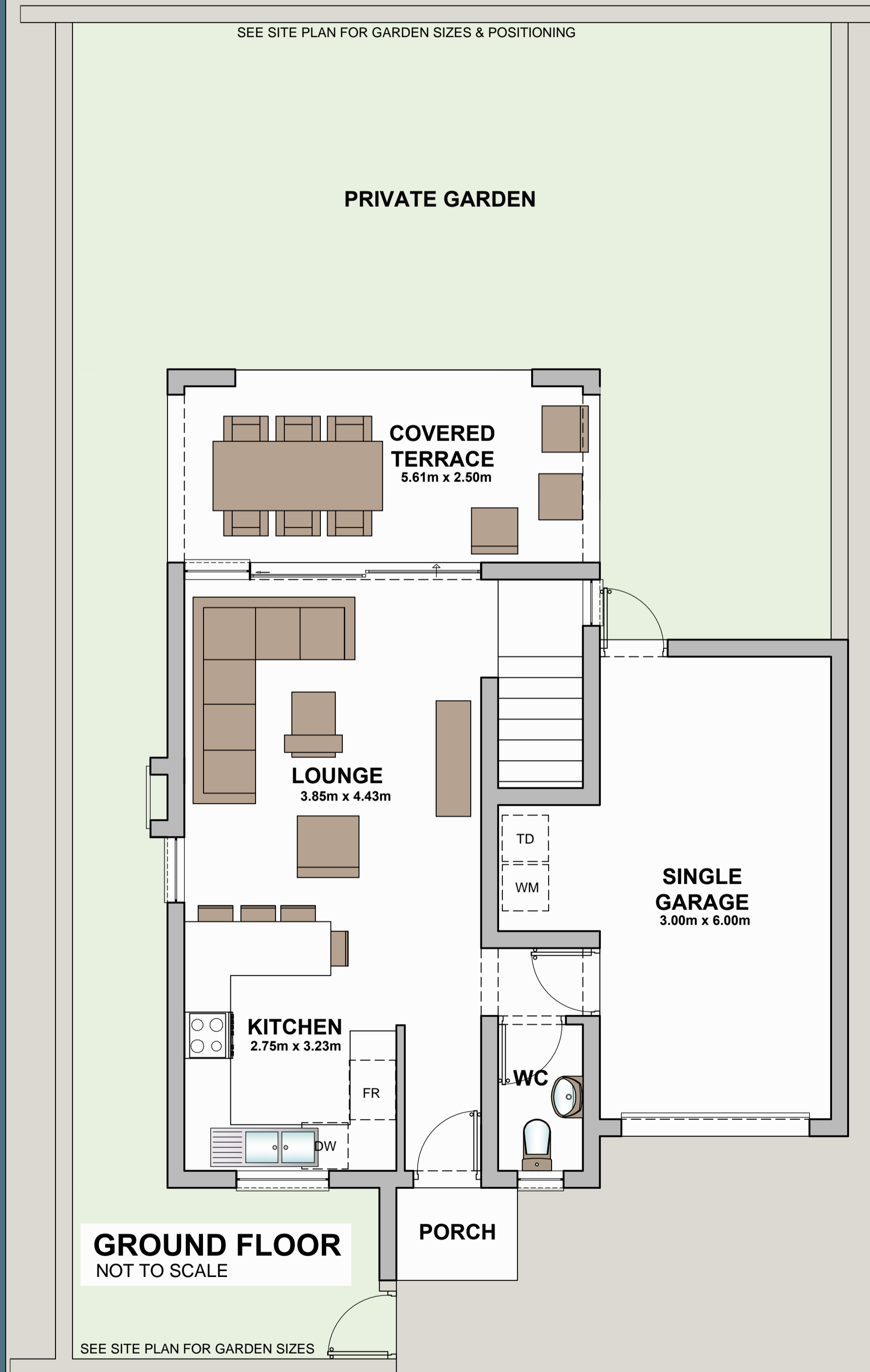
TYPE B1 SOUTH

FEATURES

- 3 BEDROOMS
- 2.5 BATHROOMS
- SINGLE GARAGE & CARPORT
- PRIVATE GARDEN
- PET FRIENDLY
- FLOOR TO CEILING SLIDING DOORS
- DESIGNER KITCHEN
- ENERGY EFFICIENT LIGHT FITTINGS
- FIBRE & DSTV READY

AREA SCHEDULE

GROUND STOREY	44.78m ²
COV. TERRACE	14.02m ²
SINGLE GARAGE	21.45m ²
PORCH	2.14m ²
SUB TOTAL	82.39m²
FIRST STOREY	74.74m ²
UNIT TOTAL	157.13m²
SINGLE CARPORT	15.00m ²
TOTAL	172.13m²



UNITS 1 - 2