

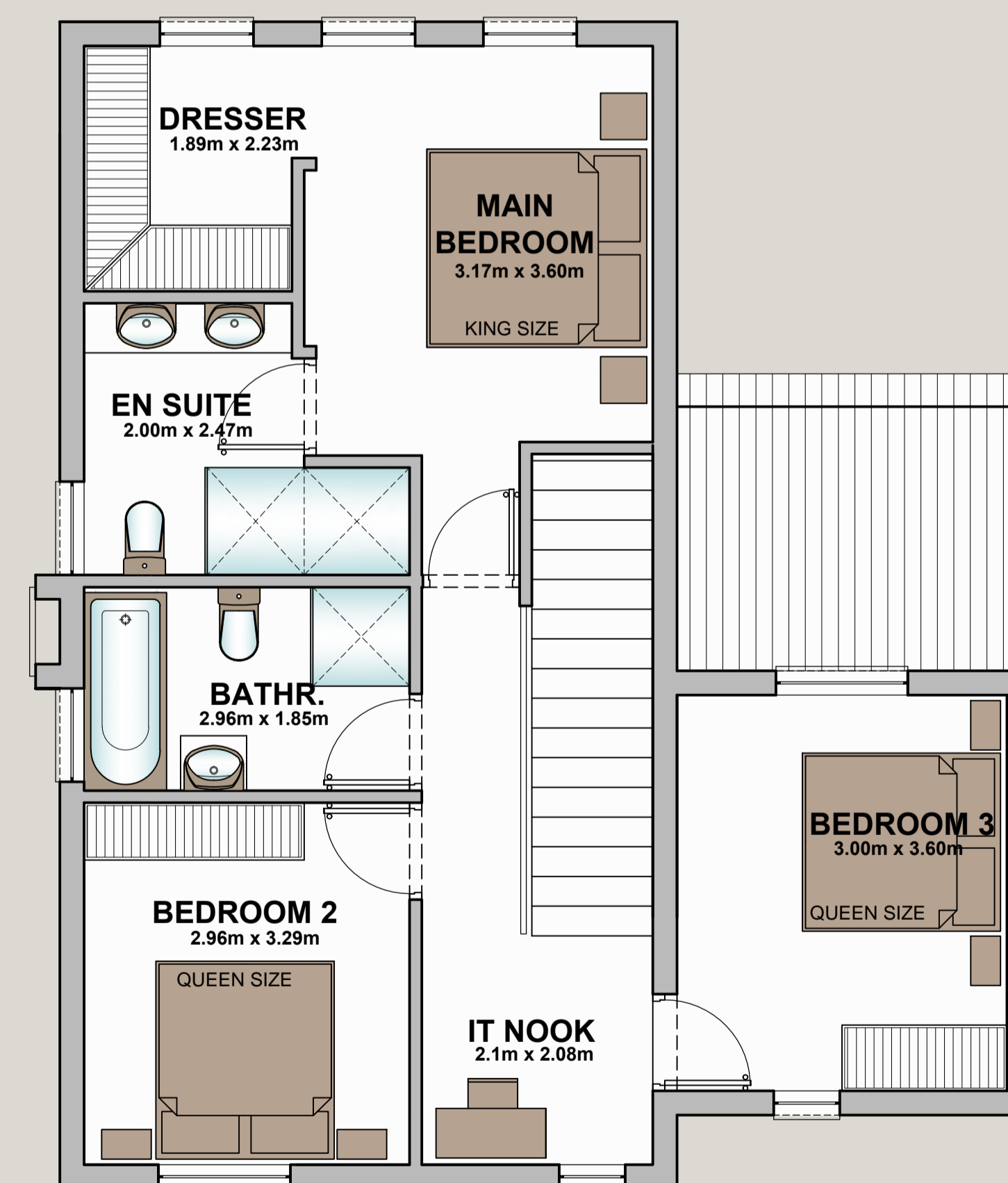
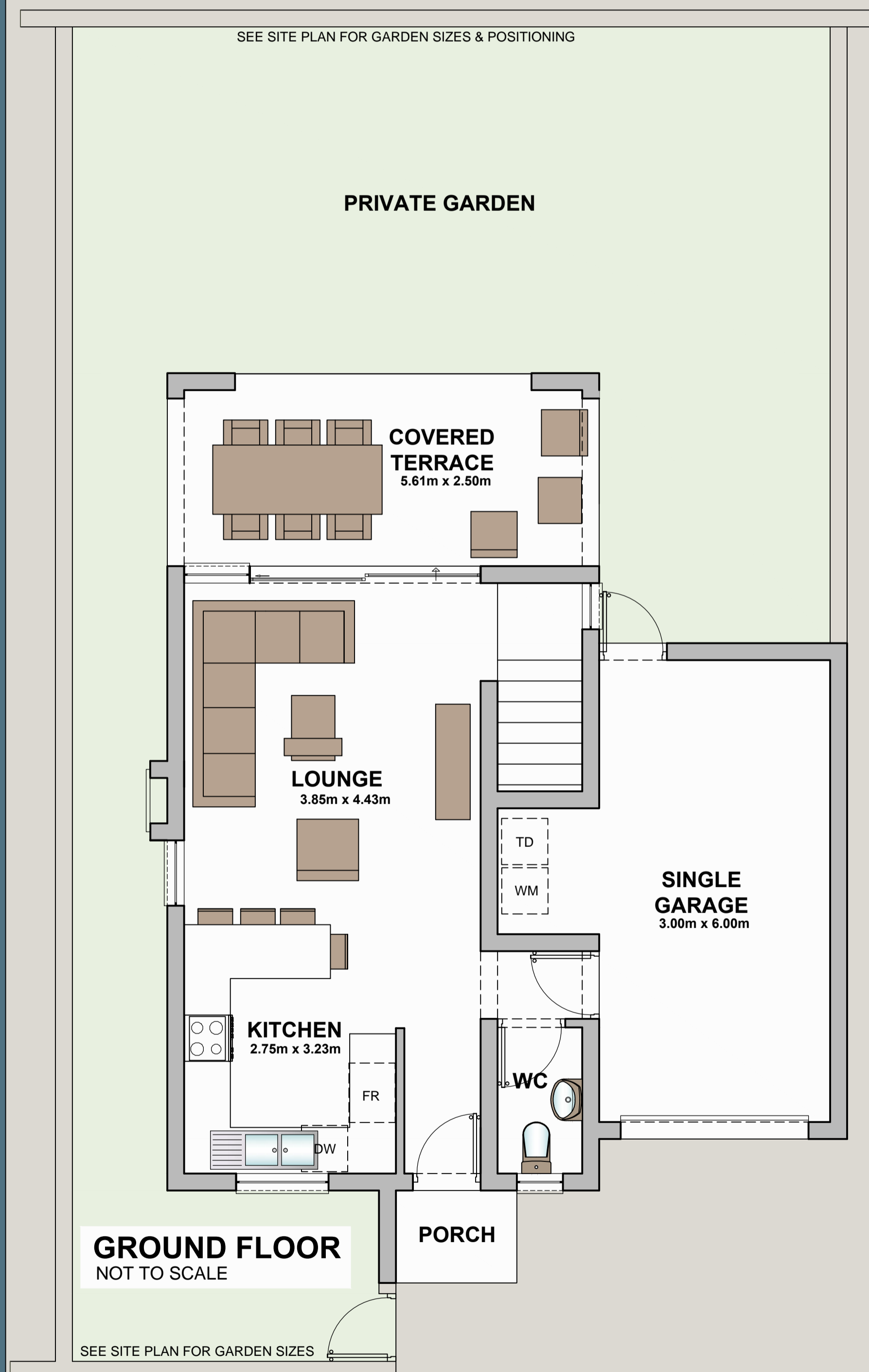


## TYPE B SOUTH FEATURES

- 3 BEDROOMS
- 2.5 BATHROOMS
- SINGLE GARAGE & CARPORT
- PRIVATE GARDEN
- PET FRIENDLY
- FLOOR TO CEILING SLIDING DOORS
- DESIGNER KITCHEN
- ENERGY EFFICIENT LIGHT FITTINGS
- FIBRE & DSTV READY

### AREA SCHEDULE

GROUND STOREY	44.78m <sup>2</sup>
COV. TERRACE	14.02m <sup>2</sup>
SINGLE GARAGE	21.45m <sup>2</sup>
PORCH	2.14m <sup>2</sup>
<b>SUB TOTAL</b>	<b>82.39m<sup>2</sup></b>
FIRST STOREY	67.72m <sup>2</sup>
<b>UNIT TOTAL</b>	<b>150.11m<sup>2</sup></b>
SINGLE CARPORT	15.00m <sup>2</sup>
<b>TOTAL</b>	<b>165.11m<sup>2</sup></b>



UNITS 21 - 32, 44 - 54