



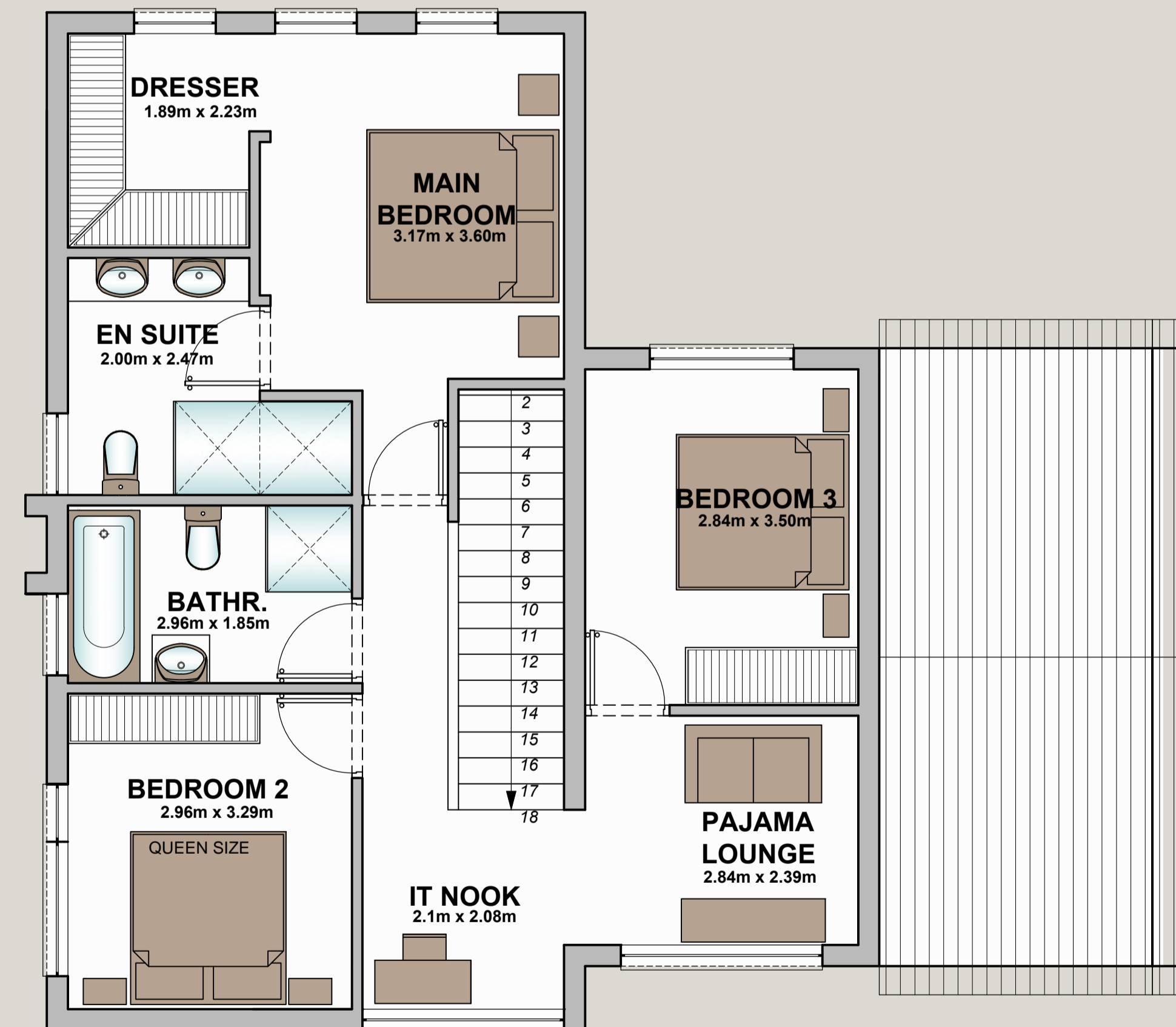
## TYPE C NORTH

### FEATURES

- 3 BEDROOMS
- 2.5 BATHROOMS
- DOUBLE GARAGE
- PRIVATE GARDEN
- PET FRIENDLY
- FLOOR TO CEILING SLIDING DOORS
- DESIGNER KITCHEN
- ENERGY EFFICIENT LIGHT FITTINGS
- FIBRE & DSTV READY

### AREA SCHEDULE

GROUND STOREY	46.04m <sup>2</sup>
COV. TERRACE	10.17m <sup>2</sup>
DOUBLE GARAGE	39.47m <sup>2</sup>
PORCH	2.60m <sup>2</sup>
<b>SUB TOTAL</b>	<b>98.28m<sup>2</sup></b>
FIRST STOREY	74.45m <sup>2</sup>
<b>TOTAL</b>	<b>172.73m<sup>2</sup></b>



**UNITS 55-57, 59-62**